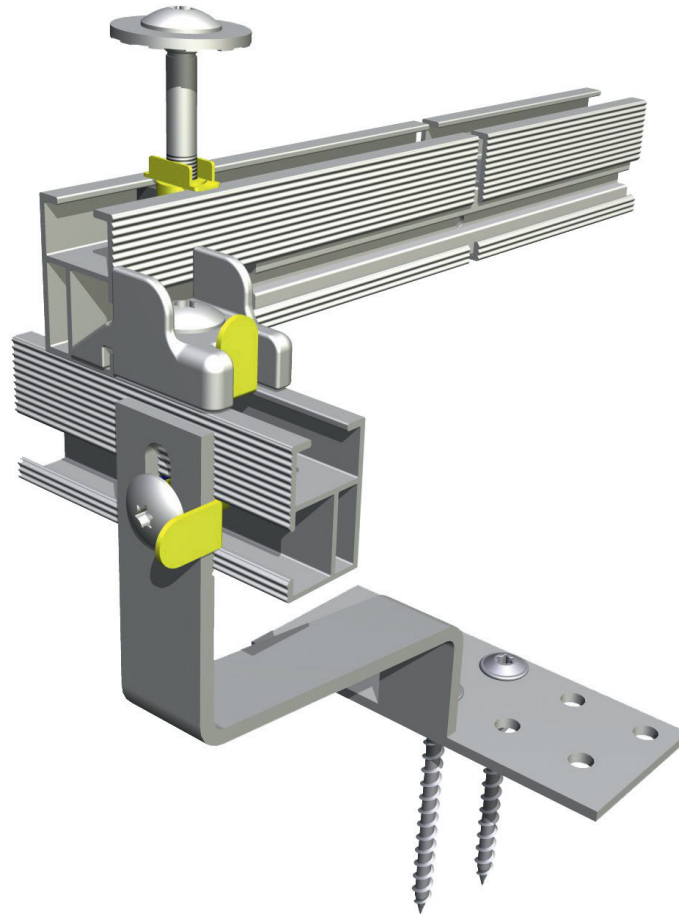


## Data sheet



**Flexibility:** Thanks to a wide range of fastening options, Sunfix plus can be assembled on all common roof types. The single or dual-layer system can be applied on both flat and pitched roofs.

**Efficiency:** The frames and the connection elements in the Sunfix plus system are perfectly aligned with each other. Easily accessible screw connections and pre-assembled components such as module clamping ensure very short assembly times.

**Durability:** Sunfix plus is characterized by high-quality materials that ensure an exceptionally long service life of the system. The system's structural analysis is certified in accordance with Eurocode 1.

## TECHNICAL DESCRIPTION

Mounting system for flat, slightly pitched and pitched roofs

Single and dual-layer system designs

Suitable for all conventional roof types:  
 tiled roofs  
 sheet metal roofs

Variable system, suitable for all roof dimensions

Average weight with roof-parallel arrangement:  
 approx. 5 kg/m<sup>2</sup> (single-layer system design)  
 approx. 7 kg/m<sup>2</sup> (dual-layer system design)

Field of application up to 5400 Pa snow load and 2400 Pa wind load (according to maximum module load)

Flat roof frames with elevated angles of 15°, 20° and 30° available

Installation perpendicular to the roof pitch\* on pitched roofs with an inclination up to 20°

10 year product guarantee

## DESIGN

Structural analysis certified according to Eurocode 1/DIN 1055

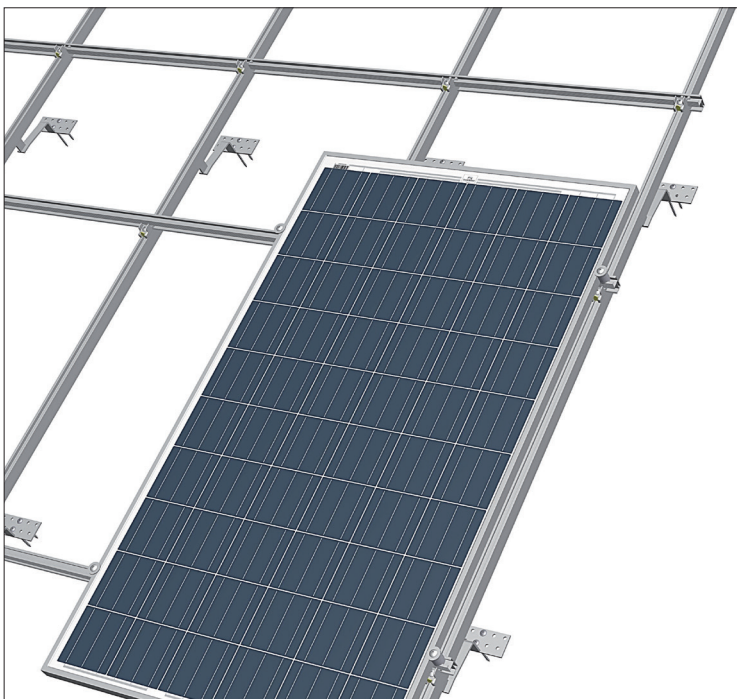
Light aluminum profile construction, aluminum and stainless steel connecting elements, assembly aids and UV-resistant plastic accessories.

Pre-assembled components for module clamps, connecting kits, and triangular frames

Individual PV plant design for SolarWorld according to system questionnaire

Transport friendly and pre-assembled kit

\* with module elevation



Text and images correspond to the state of the art upon printing. Subject to change.

## OFFICIAL STRUCTURAL ANALYSIS REVIEW BY



Henneker, Zillinger Ingenieure  
 Königswinterer Straße 329, 53227 Bonn  
 Fon (0228) 97194-0  
 Fax (0228) 97194-99  
 info@hzi-bonn.de



## CERTIFICATIONS PITCHED ROOF MOUNTING

